

WILTSHIRE POLICE

CPT RWB and Cricklade Area Board report



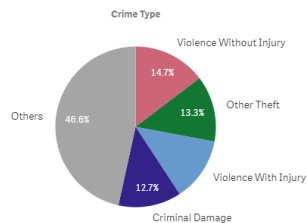
Our purpose: To keep people safe and protect our communities

June 2019

Update for Community Policing Teams to present at Area Boards and public meetings.

PERFORMANCE

Your Area - Five Highest Crime Groups (Previous 12 months)



Force Area - Five Highest Crime Groups (Previous 12 months)



Wiltshire North CPT - crime and incident demand for the 12 months to May 2019

Force-wide

- Wiltshire Police has reduced the volume of recorded crime by 1% in the 12 months to March 19 and has one of the lowest crime rates in the country.
- Our service delivery remains consistently good.
- In May we received 8,429 999 calls which we answered within 3 seconds on average and 13,294 CRIB calls which we answered within 1 minute 3 seconds on average.
- In May, we also attended 1543 emergency incidents within 10 minutes and 13 seconds on average.
- Wiltshire Police has seen a 46% increase in cybercrime (includes stalking & harassment, sexual offences and public order) in the 12 months to March 2019. This shows one example of the changing nature of demand on the police.
- The Crime Survey of England & Wales recently ranked Wiltshire as one of the top forces nationally for public confidence. It covers the 12 months to December 2018 The publication can be found here: WWW.CRIMESURVEY.CO.UK

For more information on Wiltshire Police's performance please visit:

PCC's Website - <https://www.wiltshire-pcc.gov.uk/article/1847/Performance>

WILTSHIRE POLICE

CPT RWB and Cricklade Area Board report



Our purpose: To keep people safe and protect our communities

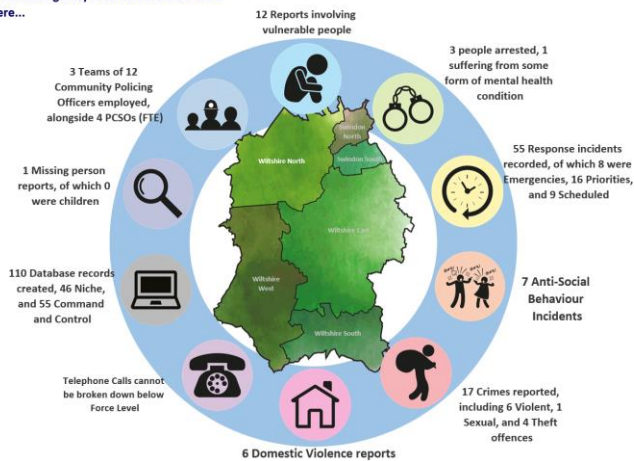
June 2019

HMICFRS Website - <https://www.justiceinspectors.gov.uk/hmicfrs/police-forces/wiltshire/>

Police.uk - <https://www.police.uk/wiltshire>

Area specific

On an average day in Wiltshire North there were...



Wiltshire North CPT Demand Overview – 12 months to April 2019

CPT UPDATES – FOR ROYAL WOOTTON BASSETT AND CRICKLADE

Incidents to note:

On the 2nd May at 21:30hrs, the injured party was driving his vehicle near Calcutt when an unknown male flagged him down, he was then hit with an unknown object through his window causing a gash to his head and bleeding that caused him to black out. The injured party's vehicle was stolen. No suspects have been identified.

On the 7th May a small-scale cannabis factory located at a property On the High Street of Cricklade, this was dismantled and destroyed. The suspect was sectioned due to his mental health, so no prosecution could be completed.

Burglary: 17th May, between 12:00hrs – 16:00hrs – LYDIARD MILLICENT Unknown suspect(s) have gained entry to rear of patio door and carried out an untidy search of property.

WILTSHIRE POLICE

CPT RWB and Cricklade Area Board report



Our purpose: To keep people safe and protect our communities

June 2019

Jewellery and cash stolen.

Burglary: 23rd May, at appx 15:00hrs – COMMON PLATT, PURTON.

Unknown suspect(s) attempted to gain entry into the property, however fled the scene when the alarm was triggered.

Commercial Burglary: 1st June, between 12:00hrs – 12:00hrs 2nd June. – Solar Farm, Royal Wootton Bassett.

Unknown suspects have gained entry into the Solar Farm through 3 gates. Suspect(s) have cut through metal mesh fencing and stolen 200 solar panels.

OIC continues with enquiries.

Drugs: 1st June, at 19:30hrs 3 males were detained for a drugs search and found to be in possession of cannabis. The three males were located in the fields behind The Academy School, LIME KILN. one male received an adult caution and the 2 other males received a street caution.

Burglary: 19th June, between 08:50hrs and 15:30hrs. LYDIARD MILLICENT. Unknown suspect(s) have gained entry to the property either through the front or back but no forced entry visible. The suspect(s) have then carried out an untidy search and stolen two rings worth £1000 and £100 of euros.

Burglary: 20th June, at appx: 10:20hrs – STONES LANE, CRICKLADE. Unknown suspect(s) have gained entry into the IP's property via a rear door causing the door to splint, nothing has been stolen as the property is currently empty.

Anti-Social Behaviour – On 19th June at appx. 19:30hrs, 2 youths from Royal Wootton Bassett were found in possession of a cap gun. This cap gun has since been seized by the police and destroyed.

The Community Policing team at Royal Wootton Bassett, Cricklade and Malmesbury are working with Neighbourhood Watch, Partner Agencies and all of our Parish Councils to try and reach out to our communities to deliver the 'Home Security' message.

HIGH LEVEL CPT UPDATES:

WILTSHIRE POLICE

CPT RWB and Cricklade Area Board report



Our purpose: To keep people safe and protect our communities

June 2019

YOUR CPT – Wiltshire North



Inspector Mark Luffman



Sergeant Don Pocock



PC Rachel Davies



PCSO Nicola Allan Cricklade



PCSO Josh Sherratt Purton



PCSO Andrew SINGFIELD – ROYAL WOOTTON BASSETT



PCSO Andrea HECTOR

WILTSHIRE POLICE

CPT RWB and Cricklade Area Board report



Our purpose: To keep people safe and protect our communities

June 2019

You can find out more about Wiltshire North CPT, including news stories and contacts for local officers, on our website: www.wiltshire.police.uk/WiltshireNorth



PRIORITIES FOR WILTSHIRE NORTH CPT	UPDATE
Priority 1:	
Burglary Patrols in the Cricklade and Royal Wootton Bassett area.	We are currently working with Neighbourhood Watch and all of the partner agencies to send out the 'Home Security' message to residents in the area. High Visibility Patrols have been put in place to prevention further offences.
Priority 2:	
Priority 3:	
Priority 4:	

WILTSHIRE POLICE

CPT RWB and Cricklade Area Board report



Our purpose: To keep people safe and protect our communities

June 2019



WILTSHIRE POLICE

CPT RWB and Cricklade Area Board report



Our purpose: To keep people safe and protect our communities

June 2019

HIGH LEVEL PCC UPDATES

- **101 call charges dropped** - At present 101 callers are charged a 15p connection fee by the telephony company. From next year this charge will no longer apply and calls to 101 will be free, after the Home Office pledged £5 million each year to cover the cost.
- **Recruitment** - To update on the additional officers and staff promised earlier this year, we had three transferees police officers start this month and another ten due to start in September. Police officers currently have five months initial training and a two-year probation period. It takes time to recruit and train officers to a high standard. During May 20 new police officers began their training and we are planning for a double intake of 40 students in October. From then our police officer recruitment is changing with three new entry routes, including a new three-year Police Constable Apprenticeship Degree, starting in June 2020. We are also on track to have 12 additional Community Co-ordinators in post across the county to focus on improved visibility and community engagement.
- **Domestic Violence campaign** - As part of a joint campaign with Wiltshire Police the PCC wrote an open letter to residents last month outlining what constitutes domestic abuse, the support available to victims and promoted Clare's Law which allows individuals to enquire about their partner, friend or family member's past. In 2018, 299 people used this scheme.

HIGH LEVEL FORCE UPDATES

- **New ACCs appointed** - Wiltshire Police has appointed two new Assistant Chief Constables. ACC Mark Cooper joined the Force from Dorset Police on 20 May and is due to be followed by ACC Maggie Blyth on 4 June. You can read more about them both on our website: <https://www.wiltshire.police.uk/article/4482/New-appointments-to-Wiltshire-Police-leadership-team>
- **National Volunteers' Week** – During the first seven days of June we will be celebrating those who support Wiltshire Police by giving up their time and skills for free. We will be highlighting the invaluable support we receive from various groups, including our Specials and Community Speed Watch.
- **Recruitment** – We are currently recruiting into a wide range of police staff roles. This includes Police Community Support Officers, Contact Centre Operators and Local Crime Investigators. If you are interested in a career with Wiltshire Police please go to our website for more details.

WILTSHIRE POLICE

CPT RWB and Cricklade Area Board report



Our purpose: To keep people safe and protect our communities

June 2019

GET INVOLVED

- You can keep up to date with the latest news in your area by signing up to our Community Messaging service – www.wiltsmessaging.co.uk
- You can follow your CPT on social media <https://www.wiltshire.police.uk/Followus>
- More information on your CPT area can be found here: www.wiltshire.police.uk and here www.wiltshire-pcc.gov.uk

FEEDBACK/ACTIONS TAKEN